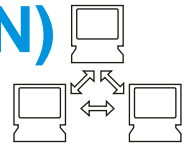
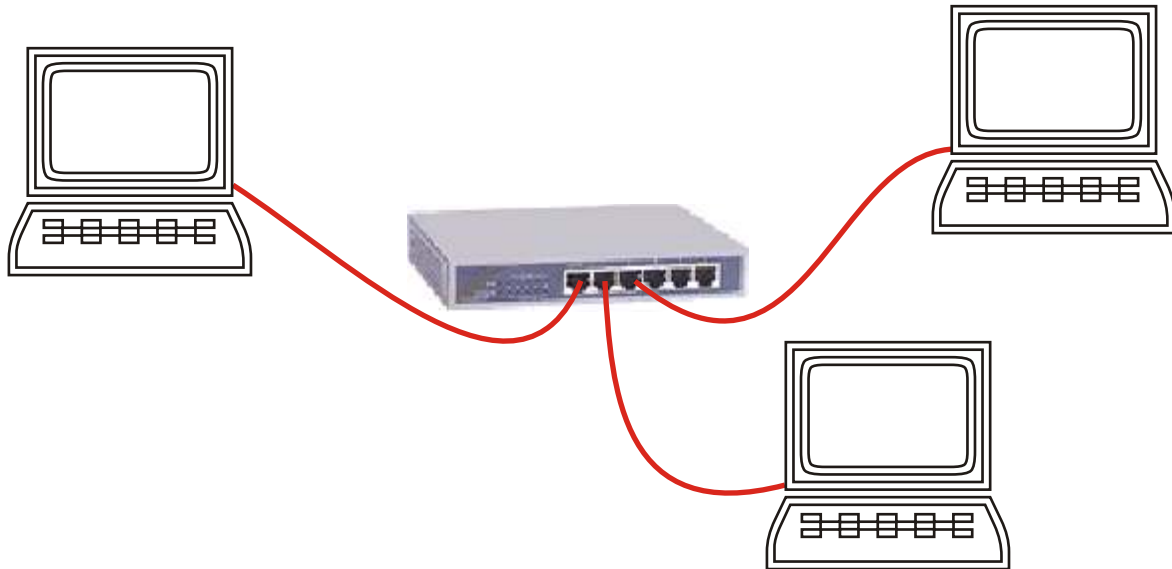


# Building A Local Area Network (LAN)



## 1. Let's get physical



### Parts List

5 Port Hub - \$30 (10M or 10/100M)

[Some Wal-Marts, any PC store, online]

Example, look at other sites for prices:

<http://www.cablesnmor.com/5-port-ethernet-hub.html>

<http://www.dataaccessories.com/lanp.html>



NIC (network interface card) 10M is fine, 10/100M better

- Desktop: \$10-20

- Notebook(PCMCIA or USB): \$45-75

[Some Wal-Marts, any PC store, Best Buy, online]



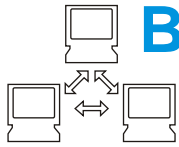
Category 5 (Cat5) cable (RJ45 connectors also called ethernet cable)

[Home Depot, Wal-Mart, any PC store, online <http://www.cablesnmor.com/cat-5-cable.html> ]

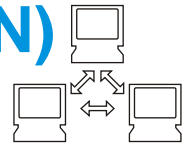
- 6' - \$2-5

- 100' - \$30-40

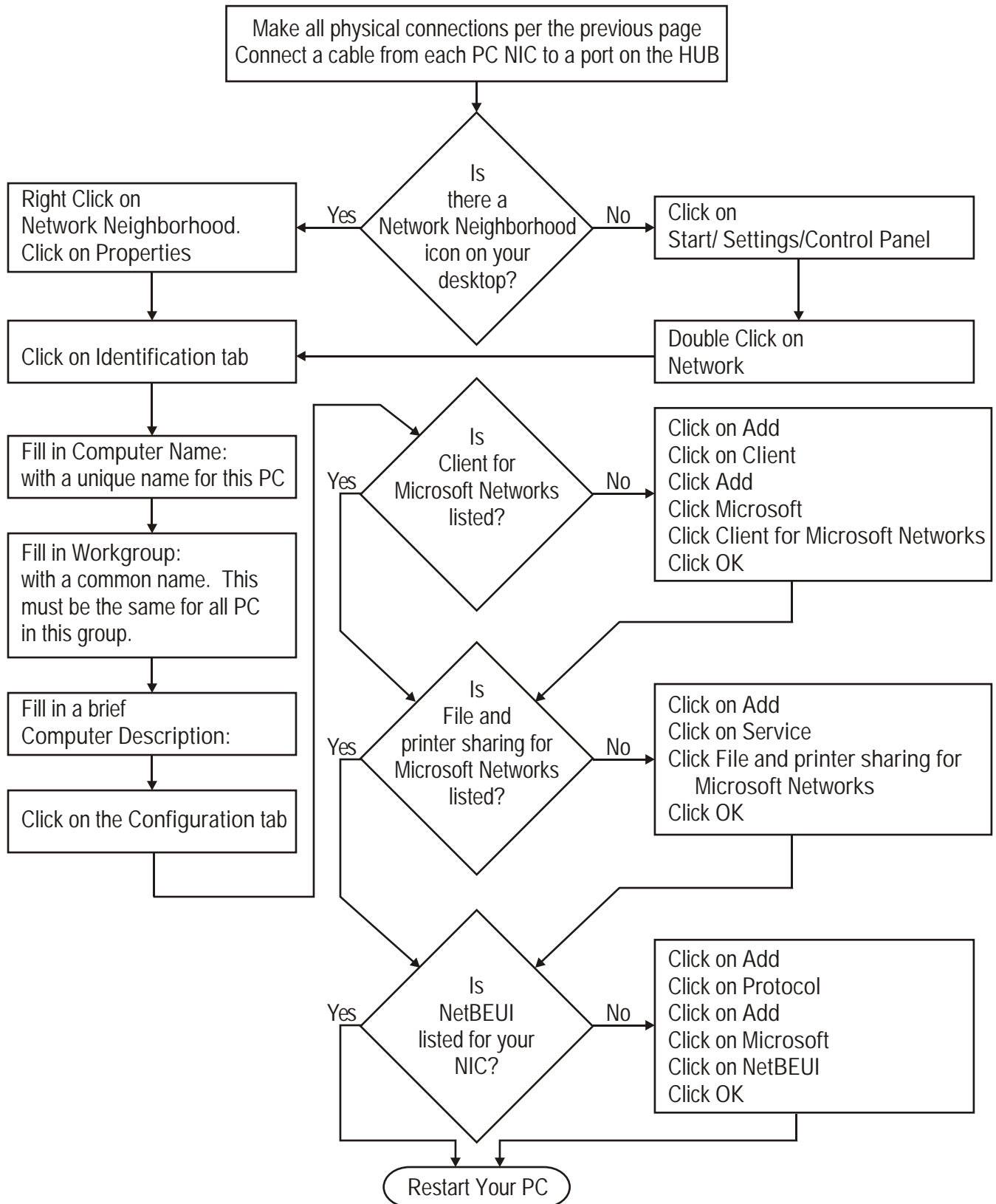


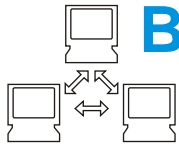


# Building A Local Area Network (LAN)

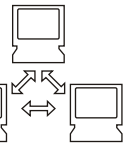


## 2. Now for the brains





# Building A Local Area Network (LAN)



## 3. It's nice to share some things...

Right Click on the My Computer icon  
Click on Explore

Click once on drive labeled C:



Click on File  
(on the menu at the top of the window)  
Click on New  
Click on Folder



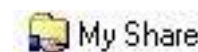
This will create  
a new folder in the right pane  
Type My Share  
Press enter  
There should now be a folder  
called My Share in the right pane

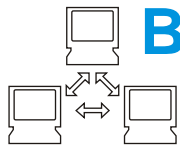
Right click on the folder you just created  
Click on Sharing

Click on the radio button Shared As  
Under Access Type click Full  
At the bottom click OK

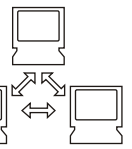


A hand will appear under your directory  
You have just created a shared directory  
Do this on each computer on your network





# Building A Local Area Network (LAN)



## 4. Network with the big boys!

Right Click on the Network Neighborhood icon  
Click on Explore

This will reveal every PC in your workgroup and printer on your LAN

Click on the + next to one of the PCs

This will reveal every folder and device that is shared on that PC

Click once on the my share folder  
All files in that folder will appear in the right pane (since we haven't moved any files to that folder it's empty right now)

Move files you want to share to your my share folder  
This folder, and the files in it, can now be accessed from any computer in your workgroup



Way to go! You now have what is called a Peer network.

You also now have the ability to share printers and an internet connection. So, this is just the beginning.

Remember: Play well with others and share your toys.